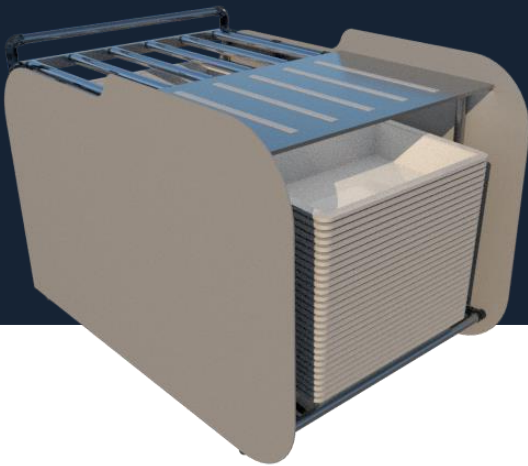


TRAY & TROLLEY RETURN SYSTEM

Sustainable, scalable, modular security lanes



The Tray and Trolley Return System (TTRS) is a cutting-edge security lane solution that can achieve a high passenger throughput per lane/hour.

HOW IT WORKS

Multiple passengers can divest simultaneously using the loading tables in the divestment area, enabling faster passengers to overtake slower ones. The loading tables are customizable for various tray sizes, although a larger tray typically maximizes throughput.

Trays are returned to the divestment area on the staff side of the security lane using the transfer trolley operated by staff. Each trolley has a high capacity, which minimizes the number of tray replenishment journeys, ultimately increasing efficiency and reducing the number of lanes required.

RIGHT, *The Transfer Trolley is always kept within the secure area of the security checkpoint, preventing unscreened passengers from coming into contact with the trolley. This eliminates the need for frequent security checks on the trolley.*

AN INTEGRATED SYSTEM



SECURITY TRAY

Large stackable trays maximize passenger throughput and minimize tray replenishment trips



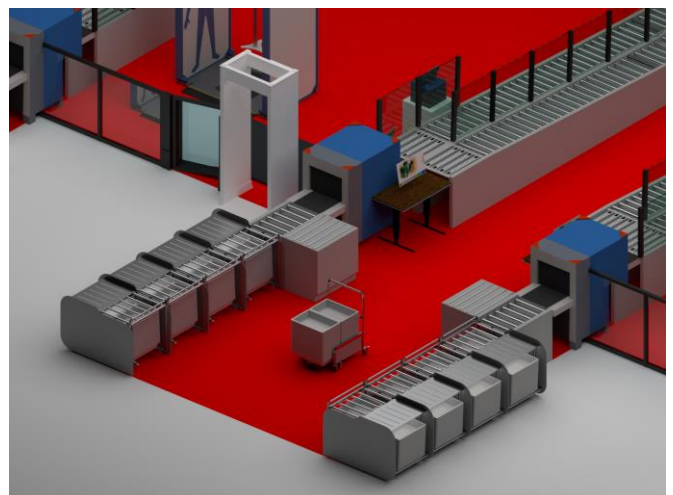
LOADING TABLE

Parallel divestment enables faster passengers to overtake slower ones



TRANSFER TROLLEY

Large tray capacity reduces the number of journeys. Seamless transfer of trays to Loading Table



BENEFITS

TTRS is a cost-effective choice for regional airports that want to benefit from increased throughput and efficiency without the high investment costs. The modular design allows for quick and seamless implementation. Moreover, capacity can be expanded by adding units in stages over time.



SECURITY

Security is enhanced by trolleys always remaining airside, eliminating the need for re-screening.



CAPACITY

Increase checkpoint capacity and efficiency by achieving high passenger throughput per lane/hour.



WAIT TIMES

Higher throughput leads to shorter wait times for passengers. The easy-to-use system makes for a pleasant passenger and staff experience.



MODULAR

Units can be added and removed easily, allowing the lane to be built to the exact specifications of the airport. Fast installation minimizes operational disruption.



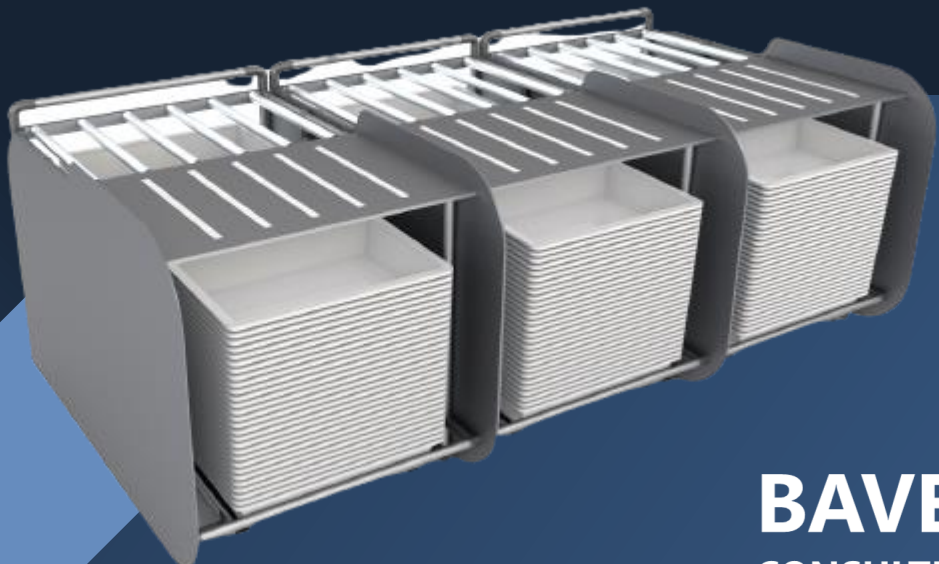
SUSTAINABLE

No energy consumption benefits both the planet and your wallet.



MAINTENANCE

Gravity-based lane design reduces maintenance needs. Reduced downtime as x-ray integration is not required.



BAVEL
CONSULTING



SECURITY TRAY

- Designed for use at airport security X-RAY machines
- Anti-microbial properties ensure higher hygiene levels
- Built-in stops enable easy separation of trays
- The turned-out edge allows for an easy grip when lifting
- Anti-slip material provides a better grip on the X-RAY machine belt



LOADING TABLE

- High storage capacity of 84 trays
- Separators make each position clearly identifiable
- Continuous tray feed due to gravity-system
- Simple locking system for connecting multiple tables.
- Frictionless strips allow for easy tray movement
- Airport branding options available



TRANSFER TROLLEY

- Extendable trolley to increase loading capacity
- Compact design for easy storage when not in use
- Easy to load and unload trays into the Loading Table
- Raised Trolley edges protect trays from collisions
- Front bevel ensures the stability of trays when coming to a complete stop

BAVEL

CONSULTING

About

Bavel Consulting, founded in 2019, provides airport security consultancy services in checkpoint design, analysis, implementation, and equipment. Our mission is to create efficient and passenger-centric security checkpoints worldwide.

If you would like to know how we can help increase the efficiency, passenger service, and staff experience at your security checkpoint, don't hesitate to contact us.

Tel: +353 87 333 8659

Email: info@bavelconsulting.com

Web: www.bavelconsulting.com

Social: www.linkedin.com/company/bavelconsulting